



## Analysis of Auli'i Cravalho's Character Related to Liberal Feminism in Moana Disney Movie by Ron Clements and John Musker

**Abdul Muhid Murtadho<sup>1</sup>**

[muhid@stibaiec-jakarta.ac.id](mailto:muhid@stibaiec-jakarta.ac.id)

*English Literature Department, Sekolah Tinggi Bahasa Asing –IEC Jakarta*

**Lingga Yulianda**

[linggayulianda64@gmail.com](mailto:linggayulianda64@gmail.com)

*English Literature Department, Sekolah Tinggi Bahasa Asing –IEC Jakarta*

**Mukhlasul Fasikh**

[mukhlasul@stibaiec-jakarta.ac.id](mailto:mukhlasul@stibaiec-jakarta.ac.id)

*English Literature Department, Sekolah Tinggi Bahasa Asing –IEC Jakarta*

**Julyanta br Sitepu**

[Julyanta@stibaiecjakarta.ac.id](mailto:Julyanta@stibaiecjakarta.ac.id)

*English Literature Department, Sekolah Tinggi Bahasa Asing –IEC Jakarta*

Murtadho, A.M, Yulianda, L, Fasikh, M., and Sitepu, J.Br. (2024). Analysis of Auli'i Cravalho's Character Related To Liberal Feminism In Moana Disney Movie by Ron Clements And John Musker. *Journal of English Language and literature*, 9(2), 333-344. doi: 10.37110/jell.v9i2.243

Received: 22-07-2024

Accepted: 31-07-2024

Published: 02-09-2024

**Abstract:** This research focuses on analyzing Auli's Cravalho's characters related to liberal feminism in Moana Disney Movie. The writer uses a qualitative descriptive approach to achieve and collect data through Moana Movie. This research is aimed at finding how Auli'i Cravalho's Characters (as Moana) in Moana Disney Movie, showing the action of Auli'i Cravalho's (as Moana) to defend her rights as woman in Moana Disney Movie, and explain the scenes showing the character of liberal feminism. Based on the analysis, The result of the research shows that there are six positive characters and four negative character in Moana Movie. There are five action scenes showing liberal feminism, the researchers hope this analyzing on the Moana film is expected to provide valuable insights or significant contributions to the study.

**Keywords:** *Character, Liberal Feminism, Movie, Literature*

### INTRODUCTION

Every human being in this world has the right, especially for women that have the right for the equality, freedom, and self-discovery. Women cannot gain the right to know their selves and to be free for some people. The chance to get the same opportunity as men for women still low. As stated by Elizabeth Jameson and Susan Hodge Armitage in *Writing the Range* (1994, p. 437): *Race, Class, and Culture in Women's West*, "they said in 1930 the ideologies used to the family were typically patriarchal"

The woman right for Feminism is a range of

political movements, ideologies, and social movements which share a common goal that are to define, to establish, and to achieve political, economic, personal, and social equality of sexes. This includes seeking to establish educational and professional opportunities for women that are equal to such opportunities for men. Liberal feminism focuses on equality of men and women.

Equality about women and men to get the same education background is an issue since a long time ago. Until now, even though some people have known the equality for women to get knowledge

<sup>1</sup> Corresponding author

and opportunity like men in working fields. Furthermore, they think women just stay at home, do house chores, and give birth. Those things mentioned above are the problems for women to deal with and to get the same opportunity like men. Therefore, this feminism movement appears to fight for women right.

Liberal feminism, like liberal political theory in general, is sometimes criticized for overemphasizing equality and the promotion of autonomy at the expense of valuing diversity. In addition, Eslin said that some might thus see an approach to difference in education that is based on liberal feminism as a threat to cultural diversity (Enslin P. 2003, pp. 73-87). This article argues that although cultural diversity has some benefits, liberal feminism should not be deterred from promoting autonomy and equality for women by encouraging the alteration of practices that harm their interests.

Otherwise, the well-known movie namely Moana in Disney movie provides an explanation regarding that liberal feminism which is applied to women should have equal rights to drop or threaten a culture. It seem that it is desirable that Auli'i Cravalho's (as Moana) wants to show her own existence as woman in that movie. Her father wants to try and keep her safe and thinks she should stay on the island. But when the Jeopardy's island is in danger, she sets off to save that island alone. She is breaking her family's expectations and regulations. She just started following what she feels is right. Moana is a fierce independent woman and an example of the cultural feminist perspective. She is showing the world that she can be an independent strong woman who is capable of creating her own story without any help. Contrary to many past Disney Movies Moana is not a princess that needs to be saved, she instead is a princess who save her family and society life.

According to (Mandikdasmen - Ministry of National Education) The character is a way of thinking and behaving that characterizes each individual to live and work, both within the family, community, nation and state. It means that Individuals who have good character can make decisions and dare to take responsibility against the risk of his decision.

The definition of characters in films is generally the same as the meanings of characters in film literary works, in which there are elements of narrative and depiction of a character visually. In the world of literature, according to Jones in

Burhan, character/character is a form of painting a clear picture of someone who featured in a story. Burhan emphasized that the characters in the story occupies a strategic position as a carrier and messenger (mandate, moral) or something that is intentionally conveyed to the audience (Burhan, 2006:17)

### **Character of Classification**

Film as a work of fiction as well as in literature, has a character with specific roles. According to Burhan, in terms of the role or the level of importance of the characters in a story, the characters are divided into two categories: The main character and Additional characters.

The first study is a bachelor's thesis written by Ika Puspitasari, a student of the Faculty of English Letters at Syarif Hidayatullah State Islamic University in Jakarta, titled The Liberal Feminist Values of the Protagonist in the Film Suffragette (2015). Based on her thesis, she identifies three problem formulations. The first is how Maud, as the protagonist, is portrayed in the film Suffragette, and the second is how the protagonist's feminist values are portrayed in the film Suffragette. Based on the problem formulation, Puspitasari's study focuses on the female protagonist named Mud Watts and the values of liberal feminism perceived through the protagonist using Betty Friedan's feminist theory.

The second study is a bachelor's thesis (2017) by Nuraisa Fahmi, a student of the Faculty's Department of English Literature, entitled "Analysis of Liberal Feminism Based on the Leading Role of Aung San Suu Kyi in the Film 'The Lady'". She graduated from the Faculty of Humanities at the Sharif Hidayatullah State Islamic University of Jakarta. "The Lady" is a bibliographical film made in honor of Burmese democratic activist Aung San Suu Kyi. Director Lec Besson directed the film in 2011. Fahmi's research focuses on how the character of a woman is portrayed and reflected through liberal feminism through the dialogue and images of the film. The protagonist of the film "The Lady" is a woman named Aung San Suu Kyi. She is the daughter of General Aung San, Burma's independence hero. Aung San lives with gender inequality and discrimination. The author tried to analyze Aung San's characteristics from various aspects, such as family, government, and even political aspects. She is portrayed as a woman who fights against gender issues. In the end, Aung San



is able to break down gender inequality and becomes the leader of the conservative party. Significantly, Aung San also broke the record of becoming Asia's first female prime minister.

The last study is a journal article titled "Analysis of the Novel Perempuan Berkalung Sorubang: Feminist Perspective" by Septa Ariyanika, a student of IAIN Raden Intan Lampung. It was published in 2016 in the journal Volume 9 (2). Ariyanika's study focuses on the novel titled *Perempuan Berkalung Sorubang* by El Haliyekuy. She also formulated two problems to be discussed further. The first problem is to describe the feminism present in the novel *Perempuan Berkalung Sorubang*. Secondly, to know the types of feminism in the novel *Perempuan Berkalung Sorubang*. Anisa is the protagonist of the novel and lives in an Islamic and religious environment. She is the daughter of a Kyai tribe and is under pressure from her father. Based on Ariyanika's analysis, there are two types of feminism in the novel *Perempuan Berkalung Sorubang*: liberal feminism and radical feminism. In the novel *Perempuan Berkalung Sorubang*, liberal feminism is represented by the protagonist Anitha, who receives special treatment from her family.

Based on the related studies above the researcher is focus to analyze about the Analysis of Auli'i Cravalho's Character Related to Liberal Feminism in Moana Disney Movie by Ron Clements and John Musker.

### **Theory of Liberal**

The term "liberal" comes from the Latin word "liber" which means free and not a slave or a condition in which a person can be free from being controlled by another person. The meaning of the word "free" has expanded and become the attitude of the educated class in western countries which opened the door to freedom of thought (old liberalism). By expanding the meaning of "free" to "freedom of thought", the word "liberal" is also expanded and has various meanings (Zarkaziy, 2009). Also, Subagja, as quoted in Rahmat (2016), defines liberalism as an ideology that emphasizes individual or personal freedom, socio-political philosophy, and economics. It focuses on individual freedoms of contract, production, consumption, exchange, and competition as well as the right to privately own all kinds of things. From this understanding, there are at least four characteristics that can be drawn from liberalism. They are, Liberalism is freedom and choice, Liberalism is a systematic political creed, Liberalism is the embodiment of reason and

tolerance, and Liberalism is an ideology of freedom, equality and freedom.

### **Theory of Feminism**

The feminist movement started in the 18<sup>th</sup> century, but ended in the 20<sup>th</sup> century, women's voice in law, especially theory law, appearance and meaning. Feminist law based on sociology feminists, feminist philosophy and feminist history are extensions attention of women in later life. At the end of the 20<sup>th</sup> century, movement Feminists are widely seen as an offshoot of the Critical Law movement

The definition of feminism according to Najmah and Khatimah Sai'dah in her book entitled *Revision of Women's Politics* (2003:34) mentions that feminism is an awareness of oppression and exploitation of women that occur both in the family, at work, and in society as well as conscious action by both men and women to change the situation lexically. Feminism is a demanding movement full equality of rights between women and men.

### **Different Types of Feminism**

There are some of the following types of feminism. According to Mandell (2017) respective definitions and opinions. The researcher tries analyzing each type of feminism as follows:

#### **a. Liberal Feminism,**

liberal feminism tries to fight for women to reach an agreement on legal rights based on social and political law. That is, this flow rejects all forms of harassment against women. (18<sup>th</sup> century) asserted, if reason is the ability that distinguishes humans from animals, then if women are not animals, then women and men both have this ability

#### **b. Radical feminism,**

Radical feminism namely gender differences can be explained through biological or psychological differences between men and women. According to this school, men's power over women based on men's ownership and control over women's reproductive abilities has led to oppression of women. Radical feminism is based on the view that oppression of women occurs as a result of a patriarchal system. The female body is an object that is primarily oppressed by male power.

#### **c. Marxist feminism**

Marxist feminism adheres to a theory of conflict that is based on thought of Karl Marx. According to Marx the relationship between husband and

wife is similar to bourgeois and proletarian relations. on the system capitalism, women clamp even perpetuated by profitable ways and reasons. Male labor who work in factories and are exploited by capitalists, so on return home and engage in a working relationship with his wife.

#### **d. Postmodern Feminism**

Postmodern feminist theory, all identities and any "truths" are regarded as already implicated in, if not products of, a person's culture. It also means that postmodern feminism seeks to challenge sexism and gender-based oppression by questioning all dominant cultural norms and accepted truths, including taken-for-granted norms of feminist thinking and practice.

#### **Theory of Liberal Feminism**

According to Edi Suharto (2006), theory of liberal feminism believes that society has violated the value of equality rights towards women, especially the way they define women as a group rather than individual. This notion proposes to have the same right as men. The main movement of liberal feminism is not to propose fundamental structural changes, but let the women into the structures that exists based on principle of equality with men.

#### **METHOD**

The method used in this study is the qualitative content analysis method, namely content analysis. Content analysis is a research method that involves the systematic analysis and interpretation of the content within various media sources, including movies. It aims to uncover patterns, themes, and meanings embedded within the movie content. Content Analysis is a qualitative research technique that emphasizes the examination of the content of communication, the meaning within that content, the interpretation of symbols, and the understanding of symbolic interactions that occur in communication (Bungin, 2011).

The Primary Source of Data are Story of the movie Transcript of the movie and The Secondary Source of Data are Journal Data, Books, Ebooks and Website.

In this research, the researcher used a Moana movie and the transcripts of Moana movie as a primary source and books, ebooks, journal and websites as the secondary sources to analyze the data. Therefore, the researcher uses some steps of analyzing the data in this thesis as follow. The first step is The researcher downloads Moana movie watching the movie, The second is reading a

transcript, The third step in the analysis process is data sorting, The fourth is finding the character, action and scenes. Finding the related theory of the study, In the fifth step, the characters, actions, and scenes of the Moana movie are thoroughly analyzed, The sixth step is writing the result of analysis about characters, action, and scenes of Moana movie based on the analysis data, and the final step, the researcher formulates a comprehensive conclusion based on the findings of the study, summarizing the key insights derived from the analysis of the Moana movie

## **FINDINGS AND DISCUSSIONS**

### **a. List of Positive Character**

No	Character : Persistent
1	<p><b>Description :</b> Moana is incredibly determined and persistent in achieving her goals. Despite facing numerous obstacles and discouragement, she remains resolute in her quest to restore the heart of Te Fiti and save her people.</p> <hr/> <p><i>Transcript and Scene :</i> Moana: we still must to return the heart Maui: my hook cracked Moana: Maui you must return the heart</p> <hr/> <p><i>Duration : 76:00</i></p>



*FIGURE 1 Scene of ambitious character*

No	Character : Courageous
2	<p><b>Description :</b> Moana displays immense courage throughout her journey. She fearlessly sails across treacherous waters, confronts dangerous creatures, and faces her own doubts and fears with bravery.</p>

*Transcript and Scene :*

Moana: Te Ka can't follow us in the water, if we can get past the barrier island. We will arrive at Te Fiti. (Moana fought Te Ka alone and managed to trick her so that she arrived in front of Te Fiti Island.)

*Duration : 83:28*



*FIGURE 2 Moana and the aunt sailing*

No Character : Compassionate

3

**Description :**

Moana shows a deep sense of compassion for others. She empathizes with the struggles and needs of her people and is committed to protecting and preserving her community.

*Transcript and Scene :*

Moana: Let him come to me (Moana spoke to the ocean so that the ocean would open the way for Te Ka and her to meet) (Moana sings with the lyrics stating that Te Ka is not her identity but Te Fiti)  
Moana: I know your name, they stole the hear in you, this is not you, you know who you are, the real you.

*Duration : 88:00*



*FIGURE 3 Moana Spoke to the ocean*

No Character : Resilient

4

**Description :**

Moana demonstrates resilience in the face of challenges. She learns from her failures, adapts to new situations, and continues to push forward despite setbacks.

*Transcript and Scene :*

(After leaving Maui, Moana sails alone to Te Fiti Island learning from her failure. Moana knows how to get past Te Ka after her failure with Maui).

*Duration : 83:46*



*FIGURE 4 Moana sails alone to Te Fiti*

No Character : Resilient

5

**Description :**

Moana is an independent and self-reliant character. She takes charge of her own destiny, making decisions and taking action based on her own intuition and sense of purpose.

*Transcript and Scene :*

Moana: I'm Moana from Motunui, boarding a boat. I will cross the seas and restore the heart of Te Fiti.

*Duration : 82:00*



*FIGURE 5 Moana come to Te Fiti*

No Character : Leadership

6 **Description :**  
As she embraces her role as a leader, Moana displays strong leadership qualities. She inspires and rallies others, motivating them to believe in themselves and work together towards a common goal.

*Transcript and Scene :*  
Residents tell Moana the harvest)  
Resident: This morning I peeled coconuts and (it was seen that all the crops were damaged.)  
(Moana provides a solution)  
Moana: We have to clean up the diseased trees and plant new ones there (pointing to the vacant land)  
Resident: Thank you Moana  
Father's Moana: This leadership suits you  
(After successfully saving the world, Moana returned to her native Island and invited the residents to sail outside the reef. She led the residents while teaching them how to sail.

*Duration : 95:50*



*FIGURE 6 : Moana come to te fiti*

**b. List of Negative Character**

No Character : Boundary-breaking

1 **Description :**  
At the beginning of the story, Moana feels constrained by the boundaries set by her father regarding ocean exploration. She is often tempted to break these boundaries, despite knowing the consequences.

*Transcript and Scene :*  
Moana: What if we fish beyond the reef?  
Father's Moana: No one goes beyond the reef  
Moana: I know. But if there are no fish in the lagoon

Father's Moana: Moana And there's a whole ocean We have a rule  
Moana: An old rule, when there were fish  
Father's Moana: A rule that keeps us safe....

*Duration : 14:30*



*FIGURE 7 : Moana feels constrained*

No Character : Indecisive

2 **Description :**  
Moana faces moments where she struggles to make crucial decisions. Doubt and confusion sometimes stall her before she ultimately finds the right decision.

*Transcript and Scene :*  
Moana: I tried grandma, I couldn't do it  
Grandma's Moana: It's not your fault, if you are ready to go home, I will be with you, Why do you hesitate  
Moana: I don't know

*Duration : 79:00*



*FIGURE 8 : Moana faces moments*

No Character : Stubborn

3 **Description :**  
There are times when Moana shows stubbornness, being reluctant to listen to others' advice or admit her mistakes. This can hinder her growth as a character.

*Transcript and Scene :*

Maui: What are you doing  
 Moana: Finding you a better a way in  
 Maui: Wo won't make it, turn around  
 Moana: Yes, we will  
 Maui: Moana stop, no,  
 Moana: No

*Duration : 75:30*



*FIGURE 9 : Moana shows stubbornness*

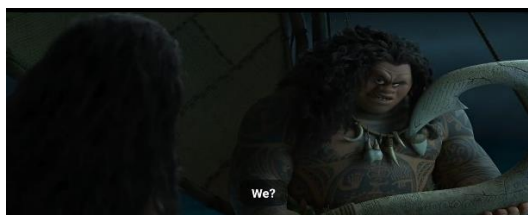
No Character : Impulsive

4 **Description :**  
 In certain situations, Moana can act impulsively, without fully considering the consequences of her actions. These impulsive decisions can have negative impacts on herself or those around her

*Transcript and Scene :*

Moana: I though we can make it  
 Maui: We?  
 Moana: I though, I could make it We can fix it  
 Maui: It was made by gods, you can't fix it  
 Moana: Next time we'll be careful

*Duration : 76:14*



*FIGURE 10 : Moana can act impulsively*

**c. The Action**

No Action : Free to make her own choices

1 **Description :**  
 Moana's journey is driven by her desire for personal autonomy and self-determination. She challenges the traditional expectations placed on her as a young woman and defies the limitations imposed by her society to follow her own dreams and make her own choices.

*Transcript and Scene :*

Moana: I'm Moana of Motunui. You will board my boat sail across the sea and restore the heart of Te Fiti

*Duration : 32:11*



*FIGURE 11 : Moana's Journey is driven by her desire*

No Action : Challenges traditional gender roles

2 **Description :**  
 Moana challenges traditional gender roles. She is portrayed as a strong, capable, and resourceful individual, breaking the stereotype that women are limited to domestic or secondary roles. Moana's actions demonstrate that women can be leaders, adventurers, and agents of change.

*Transcript and Scene :*

Moana: We gotta go  
 Maui: What about the heart?  
 Moana: He can have it. I've got a better one.  
 Tamatoa: Yes, I have the ... wait a minute, I see, she's taken a barnacle and she's covered it in bioluminescent algae as a diversion (Moana tricks Tamatoa into taking Maui's hook and leaves the place)

*Duration : 65:00*



FIGURE 12 : Moana challenges traditional gender roles

No Action : Demonstrate her empowerment and self-confidence

3 **Description :**  
Moana's actions showcase her empowerment and self-confidence. She believes in her abilities and trusts her instincts, facing challenges with determination and resilience. This portrayal encourages the idea that women can be confident in their own skills and capabilities.

*Transcript and Scene :*  
Maui: Did not see that coming  
Moana: I am Moana of Motunui this my canoe and you will journey to ...  
Maui: All right, get over it. We gotta move, and she's back  
Moana: I am Moana of Motunui  
Maui: It was moana, right?  
Moana: Yes, and you will restore the heart

Duration : 43:00



FIGURE 13 : Moana's actions showcase her empowerment and self-confidence

No Action : Moana engages in collaboration and teamwork

4 **Description :**  
Moana embraces collaboration and teamwork, seeking the wisdom and assistance of others rather than relying solely on her own abilities. This highlights the importance of equality and

cooperation, emphasizing that achieving goals can be a collective effort, regardless of gender.

*Transcript and Scene :*  
Moana: You don't wanna talk don't talk. You wanna throw me off the boat throw me off. You wanna tell me I don't what I'm doing, I know I don't. I have no idea why the ocean chose me. You're right. But my island is dying, so I am here. It's just me and you and I want to help but I can't if you don't let me.

Duration : 68:24



FIGURE 14 : Moana embraces collaboration and teamwork

No Action : Decide to protect her island

5 **Description :**  
Moana's mission to restore the heart of Te Fiti and protect her island can be seen as an expression of liberal feminist ideals. By addressing environmental issues and advocating for the preservation of nature, Moana highlights the interconnectedness of social and ecological justice

*Transcript and Scene :*  
(Moana fix the boat with herself)  
Moana: I am Moana from Motunui aboard my boat I will sail across the sea and restore the heart of Te Fiti

Duration : 82:00



FIGURE 15 : Moana's mission to





---

*restore the heart*

---

## **Discussion**

The researcher will share several points of explanation. This chapter content of explanation about the finding and discussion of character, action and scenes of the Moana movie in this chapter. There are some points from this chapter that the write is going to discussed. Firstly the researcher will describe about the character of Auli'i Cravalho (as Moana) related to Liberal Feminism in the Moana Movie. Secondly the researcher will show about the action of Auli'i Cravalho's (as Moana) to defend her rights as woman in Moana Disney Movie. The last the researcher will explain the scenes showing the character of liberal feminism and the action to defend her right in Moana Disney Movie.

## **Character**

### **a. Positive Characters**

#### **1) Persistent:**

Moana is incredibly determined and persistent in achieving her goals. Despite facing numerous obstacles and discouragement, she remains resolute in her quest to restore the heart of Te Fiti and save her people.

#### **2) Courageous:**

Moana displays immense courage throughout her journey. She fearlessly sails across treacherous waters, confronts dangerous creatures, and faces her own doubts and fears with bravery.

#### **3) Compassionate:**

Moana shows a deep sense of compassion for others. She empathizes with the struggles and needs of her people and is committed to protecting and preserving her community.

#### **4) Resilience:**

Moana demonstrates resilience in the face of

challenges. She learns from her failures, adapts to new situations, and continues to push forward despite setbacks.

#### **5) Independent:**

Moana is an independent and self-reliant character. She takes charge of her own destiny, making decisions and taking action based on her own intuition and sense of purpose.

#### **6) Leadership:**

As she embraces her role as a leader, Moana displays strong leadership qualities. She inspires and rallies others, motivating them to believe in themselves and work together towards a common goal.

### **b. Negative Characters**

#### **1) Boundary-Breaking:**

At the beginning of the story, Moana feels constrained by the boundaries set by her father regarding ocean exploration. She is often tempted to break these boundaries, despite knowing the consequences.

#### **2) Indecisive:**

Moana faces moments where she struggles to make crucial decisions. Doubt and confusion sometimes stall her before she ultimately finds the right decision.

#### **3) Stubborn:**

There are times when Moana shows stubbornness, being reluctant to listen to others' advice or admit her mistakes. This can hinder her growth as a character.

#### **4) Impulsive :**

In certain situations, Moana can act impulsively, without fully considering the consequences of her actions. These impulsive decisions can have negative impacts on herself or those around her

### **c. The Action**

**1) Moana's journey is driven by her desire** for personal autonomy and self-determination. She challenges the traditional expectations placed on her as a young woman and defies the limitations imposed by her society to follow her own dreams and make her own choices.

**2) Moana challenges traditional gender roles.** She is portrayed as a strong, capable, and resourceful individual, breaking the stereotype that women are limited to domestic or secondary roles. Moana's actions demonstrate that women can be leaders, adventurers, and agents of change.

**3) Moana's actions showcase Her empowerment and self-confidence.** She believes in her abilities and trusts her instincts, facing challenges with determination and resilience. This portrayal encourages the idea that

women can be confident in their own skills and capabilities.

**4) Moana embraces collaboration and teamwork**, seeking the wisdom and assistance of others rather than relying solely on her own abilities. This highlights the importance of equality and cooperation, emphasizing that achieving goals can be a collective effort, regardless of gender.

**5) Moana's mission to restore the heart of Te Fiti and protect her island can be seen as an expression of liberal feminist ideals.** By addressing environmental issues and advocating for the preservation of nature, Moana highlights the interconnectedness of social and ecological justice.

## CONCLUSION

Based on the analysis conducted by the researcher on the research entitled "Analysis Of Auli'i Cravalho's Character Related To Liberal Feminism In Moana Disney Movie By Ron Clements And John Musker", it is found that there are six (6) positive characters they are Persistent, Courageous, Compassionate, Resilient, Independent, Leadership and furthermore, four (4) negative characters they are Boundary-breaking, Indecisive, Stubborn, Impulsive. Meanwhile, the actions have five (5) they are Free to make her own choices, Challenges traditional gender roles, demonstrate her empowerment and self-confidence, Moana engages in collaboration and teamwork, decide to protect her island. And the last scenes in the thesis have nine (9) they are Moana and Moana's mother, Moana's Tribe elder, Moana met Maui, Moana's Grandmother here try to persuade Moana, Moana try to sail to chase, Maui take Moana's boat away, Maui arrived on the island, Moana try to sail to chase, Moana's Tribe elder.

## REFERENCES

Anasuya Adhikari, & Dr. Birbal Saha. (2022). The feminist responses to mary wollstonecraft: a reading. *EPR International Journal of Research & Development (IJRD)*. <https://doi.org/10.36713/epra11181>

Baehr, A. R. (2017). A capacious account of liberal feminism. *Feminist philosophy quarterly*,3(1). <https://doi.org/10.5206/fpq/2016.3.4>

Bimer, E. E., & Alemeneh, G. M. (2018). Liberal

feminism: Assessing its compatibility and applicability in Ethiopia context. *International Journal of Sociology and Anthropology*, 10(6). <https://doi.org/10.5897/ijasa2018.0769>

Dewi, N., & Medina, T. I. (2021). Feminism portrayed in greta gerwig's movie little women; analysis in modern era. *JEE (Journal of English Education)*,6(2). <https://doi.org/10.30606/jee.v6i2.622>

Eidelweis, R. V. P. (2018). Liberal feminism as reflected in the main character of joy movie. Diponegoro University.

Elizabeth Jameson and Susan Armitage. (n.d.). Writing the range. <https://Books.Google.Com.Tj/Books?Id=WzBrYgGoC&printsec=copyright#v=onepage&q&f=a.se>.

Fajarni Maizirina, S. M. T. (n.d.). Type of character in the main character "camp rock 1"movie <http://Jim.StkipPgriSumbar.Ac.Id/Jurnal/Download/7438>.

Gunawati, P. M., Tantra, D. K., & Juniarta, P. A. K. (2021). An analysis of liberal feminism in the notebook novel (1996) by nicholas sparks. *International Journal of Language and Literature*,4(4). <https://doi.org/10.23887/ijll.v4i4.32100>

Llopart Babot, S. (2023). The Contemporary Reception of a Feminist Icon: Translations of Mary Wollstonecraft's A Vindication of the Rights of Woman in Twenty-First Century Spain. *ENTHYMEMA*, 31. <https://doi.org/10.54103/2037-2426/18478>

Lolita Dewi, N. K., Resen, I. W., & Sidhakarya, W. (2021). Analysis of Liberal Feminism in the Novel Mulan's Secret Plan By Tessa Roehl. *Social Science, Public Administration and Management (HUSOCPUMENT)*, 1(4).

Mandell, N., and J. J. (2017). *Feminist Issues\_ Race, Class, and Sexuality*

Marjuni1, Y. A. S. (2021). Liberalism and democracy in the perspective of islamic education. [https://Journal.Uin-Alauddin.Ac.Id/Index.Php/Lentera\\_pendidikan/Article/View/20050/11323](https://Journal.Uin-Alauddin.Ac.Id/Index.Php/Lentera_pendidikan/Article/View/20050/11323), 25–31.

Marssy Diana Sampe. (2022). Rejection against the Patriarchal Society in Stephen Chbosky and Evan Spiliotopoulos Beauty and The



- Beast. <https://E-Journal.Usd.Ac.Id/Index.Php/JOLL/Article/View/3582>, 22.
- Meinawati, E. (2017). Liberal Feminism Of The Main Characters In Mirror Mirror Movie Based On Sociological Approach. *Wanastra*, IX(1).
- Miskiyah, & Sofyan, A. (2023). An Analysis of Liberal Feminism of the Main Character in Brave Film. *International Journal of Linguistics, Literature and Translation*, 6(1). <https://doi.org/10.32996/ijllt.2023.6.1.5>
- Olivia Guy-Evans. (2023). Marxist Feminism Theory. <https://Simplysociology.Com/Marxist-Feminism.Html>.
- Pandeeswari, D., & Hariharasudan, A. (2022). The Legitimacy of Liberal Feminism in Preeti Shenoy's Select Texts. *Jordan Journal of Modern Languages and Literatures*, 14(4). <https://doi.org/10.47012/jjml.14.4.18>
- Priyadharshini, P., Mohan, S., Hariharasudan, A., & Sangeetha, J. (2021). Authenticity of liberal feminism in Namita Gokhale's texts. *Linguistics and Culture Review*, 5(S1). <https://doi.org/10.21744/lingcure.v5ns1.1312>
- Purwarno, P., Mardhatillah, S., & Suhendi, A. (2021). Liberal Feminism in Ika Natassa's Novel *Critical Eleven*. *KnE Social Sciences*. <https://doi.org/10.18502/kss.v5i4.8712>
- Sakinah, H., Setyorini, A., & Surabaya, U. M. (2022). Characterization of Enola Holmes in the Case of the Missing Marquess : a Study of Liberal Feminism. *Journal of English Language and Literature*, 2(1).
- Sandrine Bergès. (2013). *The Routledge Guidebook to Wollstonecraft's A Vindication of the Rights of Woman*. Routledge.
- Sangeetha, J., Mohan, S., & Kannan, R. (2022). Liberal Feminism: Emphasizing Individualism and Equal Rights in Meena Kandasamy's *When I Hit You*. *Journal of Language Teaching and Research*, 13(1). <https://doi.org/10.17507/JLTR.1301.03>
- Septa Aryanika. (2016). An Analysis of Perempuan Berkalung Sorban Novel: Feminist Perspective. <http://Ejournal.Radenintan.Ac.Id/Index.Php/ENGEDU/Article/View/414>, 9.
- Wulandari, M. D., Supiastutik, & Pujiati, H. (2019). The Representation of Liberal Feminism in *A Woman Is No Man* By Etaf Rum. *Lentera: Jurnal Ilmiah Kependidikan*, 12(2).
- ZEHRA F. KABASAKAL ARAT. (2015). Feminisms, Women's Rights, and the UN: Would Achieving Gender Equality Empower Women? (674–689) <https://www.Jstor.Org/Stable/2480503>

**Abdul Muhid Murtadho, Lingga Yulianda, Mukhlasul Fasikh & Julyanta Br. Sitepu**

*Analysis of Auli'i Cravalho's Character Related To Liberal Feminism In Moana Disney Movie By Ron Clements And John Musker*